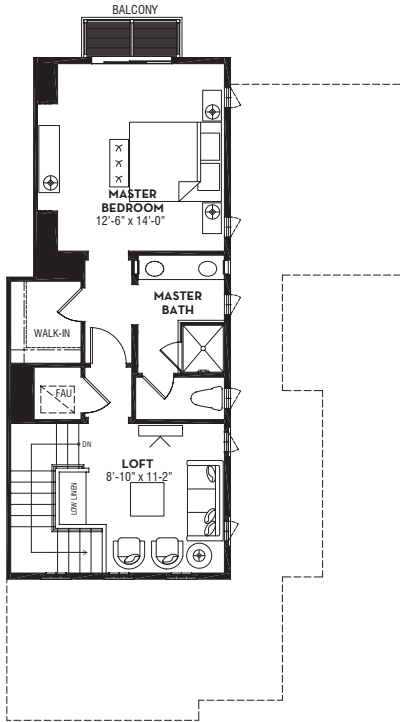




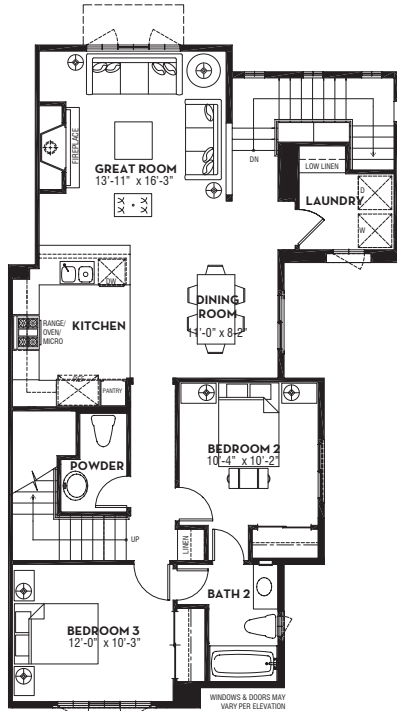
BUILDING TYPE 600A



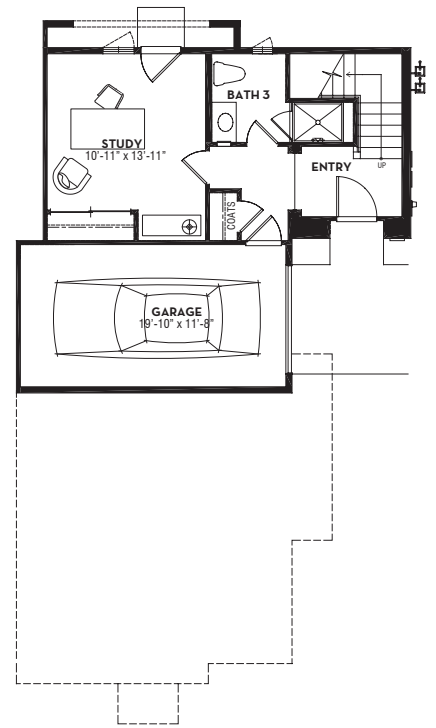
BUILDING TYPE 600B



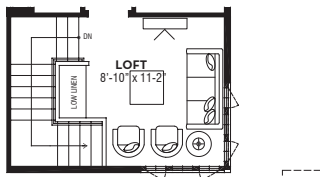
THIRD FLOOR PLAN  
UNIT OCCURS AT BUILDING 600A



SECOND FLOOR PLAN  
UNIT OCCURS AT BUILDING 600A



FIRST FLOOR PLAN  
UNIT OCCURS AT BUILDING 600A & B



UNIT OCCURS AT BUILDING 600B



UNIT OCCURS AT BUILDING 600B

# MESA

BLDG. TYPE 600A & 600B (PHASE II)

**BUILDINGS 20, 21, 25, 27, 28, 30, 34 • UNITS 35, 38, 44, 47, 48, 51, 58**

Offers 2,009 Square Feet

3 Bedrooms • 3 Baths • Powder • Great Room • Dining Room • Study • Tech • Loft  
1-Car Garage + 1 Assigned Parking Space



UCSB Community Housing Authority | For sales information, call (805) 544-5500 | info@sbha.ucsb.edu | www.oceanwalk.ucsb.edu

All renderings, floor plans and maps are artist's concepts and are not intended to be an actual depiction of the buildings, fencing, walls, driveways or landscaping. Walks, windows, porches and decks vary per elevation and lot location. Square footages shown are approximate. UCSB reserves the right to modify prices, floor plans, specifications, and amenities without notice or obligation.



# MESA

## **Kitchen**

Stainless Steel EnergyStar Appliances Included  
Custom Kitchen Cabinets Maple Wood Cabinetry  
Pantry with Adjustable Shelves  
Recessed Lighting Fixtures  
Stainless Steel Double Kitchen Sink  
Porcelain Tile Floor Finish  
Kitchen Open to Living Room and Dining Room  
Granite Countertops

## **Master Bathroom**

Dual Sinks  
Granite Countertops  
Recessed Lighting  
Shower with 6" x 6" Ceramic Tiles and Glass Enclosure  
Walk-in Closet  
13" x 13" Porcelain Tile floor Finish

## **Secondary Bathroom**

Single Sink  
Bath Tub with Integrated Tile Surround  
Granite Countertops  
Recessed Lighting  
13" x 13" Porcelain Tile Floor Finish

## **Powder**

Pedestal Sink  
Recessed Lighting  
13" x 13" Tile Floor Finish

## **Miscellaneous**

13" x 13" Porcelain Ceramic Tiled Entry  
2 Car Garage  
Dual Glazed Windows Throughout  
Tankless Water Heater  
Horizontal & Vertical Decorative Blinds  
Washer & Dryer  
Hardwood Floors

